



MIRAMAR class

Vessel name	Built	IMO	Call sign	Flag
Aceromar	2012	9552082	CQ2498	Portugal
Costamar	2011	9552020	CQIK9	Portugal
Estemar	2011	9552068	LXES	Luxembourg
Faromar	2012	9552070	CQ2496	Portugal

Vessel name	Built	IMO	Call sign	Flag
Lunamar	2010	9551662	CQIK8	Portugal
Miramar	2011	9552044	5BNV4	Cyprus
Reymar	2011	9552032	5BNU4	Cyprus
Rocamar	2011	9552056	CQ2499	Portugal

MAIN PARTICULARS

Shipyard	Western Marine Shipyard Ltd
Classification	DNV GL 100 A5 E3 Multi-purpose dry cargo ship Equipped for carriage of containers DBC DG Strengthened for heavy cargo, MC E3 AUT
Ice class	1A
Gross tonnage	3,500
Net tonnage	1,382
Length over all	99.40 m
LBPP	92.50 m
Breadth	13.43 m
Moulded depth	abt. 9.10 m
Draft (max)	abt. 6.10 m SSW
Height wl-hc	abt. 6.50 m
Airdraft from keel	24.50 m
Main engine	1 x MaK 6M25C, 2,000 kW
Bow thruster	280 kW

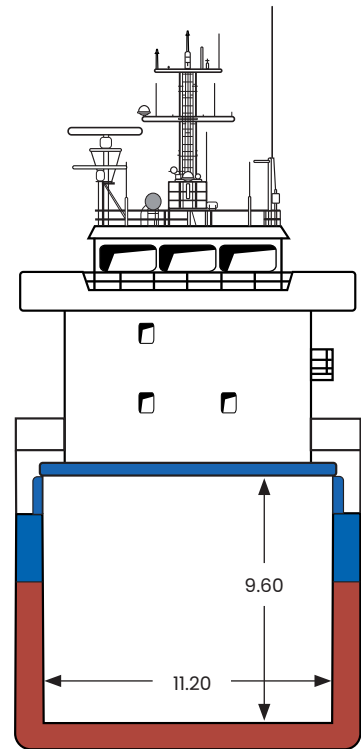
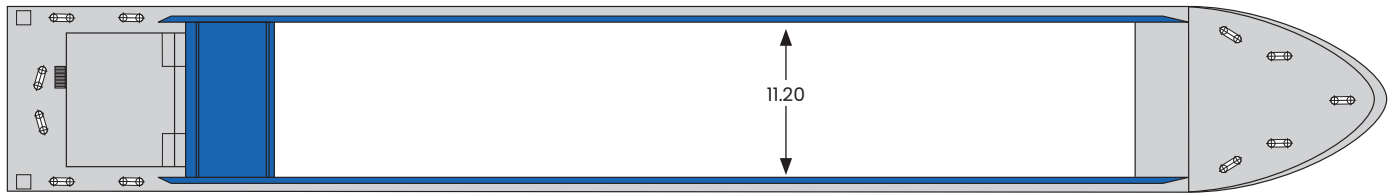
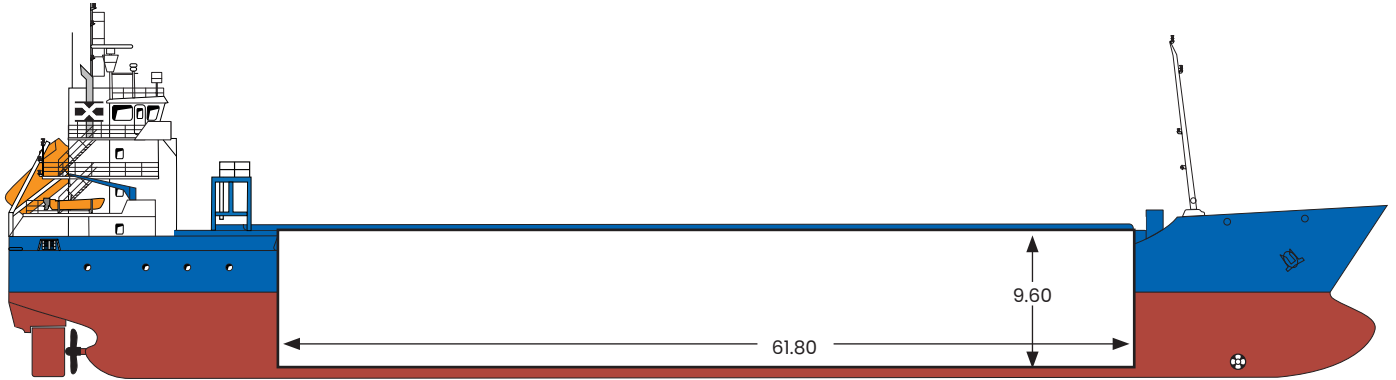
CAPACITY

DWT	5,235 mt
DWCC summer	4,900 mt
DWCC winter	4,800 mt
Cubic capacity	6,646 m ³ / 234,666 cbft
Container intake	188 TEU

HOLD & HATCHES

Hatches	pontoon type
Holds	1 hold
Hold dimensions	61.8 x 11.2 x 9.6 metres 61.8 m clear length with bulkheads fore/aft
Bulkheads	2 pcs
Tweendeck	no
Deck load	1.75 mt/m ²
Tanktop strength	15 mt/m ²

MIRAMAR class



All details are given in good faith, without guarantee and can vary on the individual vessels.