



ELECTRAMAR class

Vessel name	Built	IMO	Call sign	Flag	Class
Electramar	2023	9951824	5BDD6	Cyprus	DNV
Stellamar	2024	9951836	5BDE6	Cyprus	DNV
Ecomar	2024	9951848	5BGJ6	Cyprus	DNV
Aquamar	2024	9951850	5BGK6	Cyprus	DNV
Maximar	2024	9951862	5BLF6	Cyprus	DNV
Terramar	2025	9951874	5BLG6	Cyprus	LR

Vessel name	Built	IMO	Call sign	Flag	Class
Biomar	2025	9956276	5BPY6	Cyprus	LR
Ventumar	2025	9956288	5BQB6	Cyprus	LR
Fleximar	2025	9956290	5BQC6	Cyprus	LR
Astramar	2026	9956305	5BPZ6	Cyprus	LR
Megamar	2026	9956317		Cyprus	LR
Luxomar	2026	9956329		Cyprus	LR

MAIN PARTICULARS

Shipyard	Chowgule & Company Pvt Ltd, India
Classification	LR - Lloyd's Register General Cargo Ship Unrestricted Navigation, Strengthbottom, Ice Class 1A, Electric Hybrid (PM, PB, ZE), BWT, Cleanship, Green Passport (EU) DNV - 1A General dry cargo ship BIS Battery(Power), BWM(T), Clean COAT-PSPC(B), E0 Ice(1A), NAABSA, Recycla- ble, TMON(oil lubricated)
Ice class	1A
Gross tonnage	4,135
Net tonnage	2,160
Length over all	89.95 m
LBPP	84.95 m
Breadth	15.95 m
Moulded depth	10.05 m
Draft (ballast/max)	3.8 / 6.1 m SSW
Height wl-hc	7.70 m
Airdraft from keel	30.835 m
Main engine	1 x Yanmar, 1,920 kW at 750 rpm
Hybrid system	1 MWh battery pack
Shore power	yes
Bow thruster	300 kW

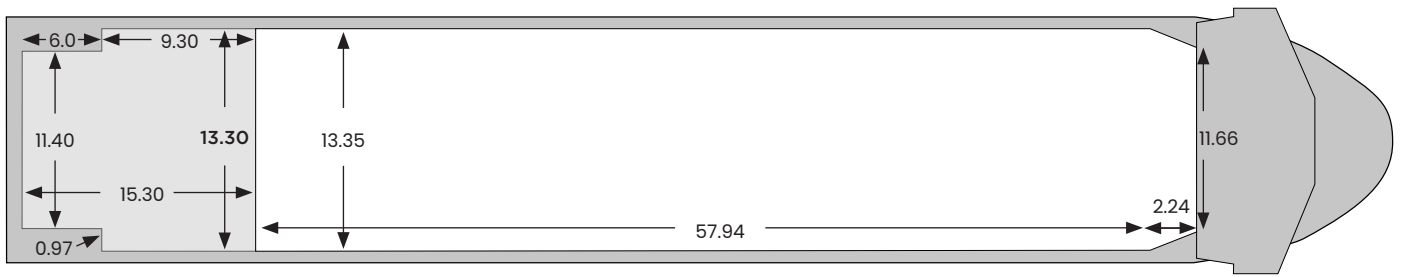
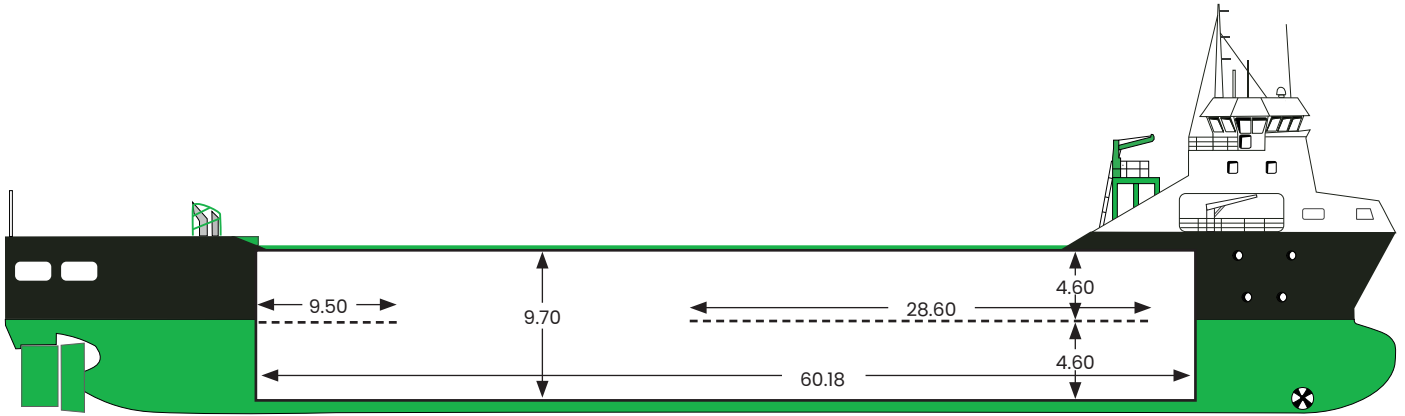
CAPACITY

DWT	5,400 mt
DWCC summer	5,080 mt
DWCC winter	4,900 mt
Cubic capacity	7,544 m ³ / 266,414 cbft (with bulkheads) 7,777 m ³ / 274,642 cbft (without bulkheads)
Container intake	100 TEU or 50 FEU on deck

HOLD & HATCHES

Hatches	pontoon type
Holds	1 hold
Hold dimensions	57.94x13.34 / 60.18x11.66 x 9.7 metres
Bulkheads	3 pcs
Tweendeck	6 pcs, 28.6 m in total
Tweendeck strength	2.5 mt/m ²
Deck load, aft cargo deck	1.75 mt/m ² Stacking load 50 mt (TEU) or 70 mt (FEU)
Deck load, hatch covers	1.75 mt/m ² Stacking load 30 mt (TEU) or 45 mt (FEU)
Tanktop strength	15 mt/m ² overall 20 mt/m ² in a loading pattern

ELECTRAMAR class



All details are given in good faith, without guarantee and can vary on the individual vessels.