



ESL Shipping  
AtoB@C Shipping

# Project References

Case examples:

- Windmill Components
- Industrial Components
- Propulsion Units
- House modules
- Tanks

PLATINUM Top 1%

ecovadis

Sustainability Rating

DEC 2024

Table of contents:

WINDMILL BLADES	2
WINDMILL TOWER SECTIONS	3
WINDMILL COMPONENTS	4
INDUSTRIAL COMPONENTS	5
ENGINES, TRANSFORMERS AND STATORS	7
PROPULSION UNITS	9
HOUSE MODULES	10
ADDITIONAL SERVICES	11

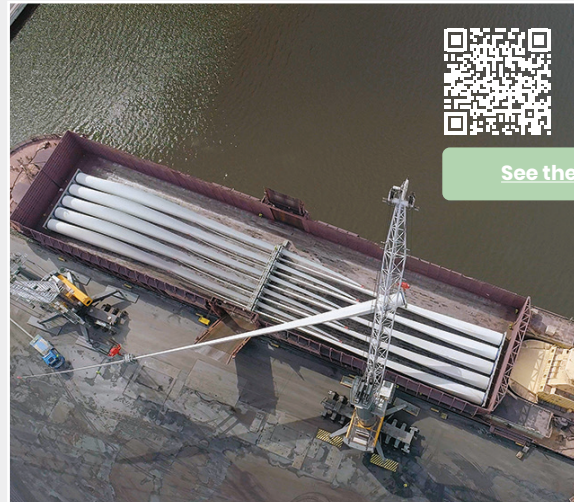


## WINDMILL BLADES

Our fleet offers a wide range of options based on the size of your blades. Our new Electramar-class vessels, featuring a bridge-forward design, enable significantly higher deck loads compared to other vessels.

2021  
BAY OF BOTHNIA  
Pusher Steel + Barge Tasku

2021  
THE NETHERLANDS TO SWEDEN  
M/S Eileen C



[See the video >](#)



## WINDMILL TOWER SECTIONS

Depending on port restrictions and required volumes, tower sections can be transported using either our handysize or coaster tonnage.

2023  
TURKEY TO FINLAND  
Several shipments



[See the video >](#)

## WINDMILL COMPONENTS

Our new Electramar-class plug-in hybrid vessels feature an unobstructed 60-metre-long hold and nearly 30 metres of tweendeck space, ensuring efficient stowage.

2024  
INDIA TO SPAIN AND ITALY  
M/S Ecomar



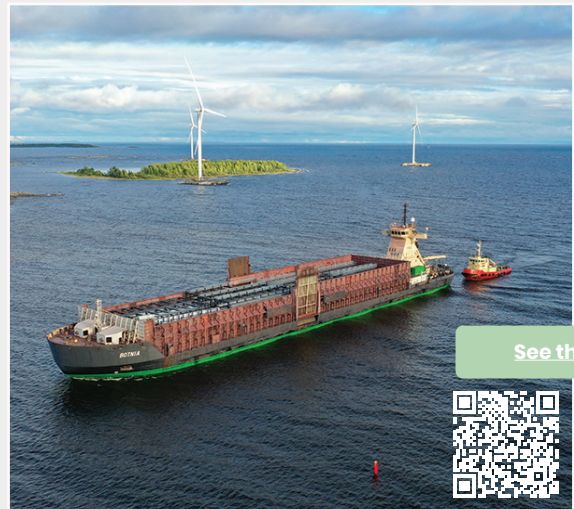
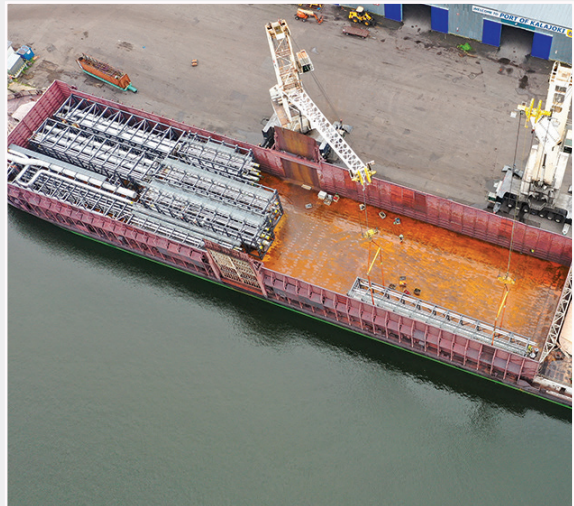
2021  
SPAIN TO DENMARK  
M/S Silvamar



# INDUSTRIAL COMPONENTS

Our fleet offers a wide range of options tailored to the size and destination of your components. For shipments within the Baltic Sea, our 105-metre-long open hold barges are an excellent choice for transporting very large units.

2022  
PIPE BRIDGE SECTIONS  
KALAJOKI TO KEMI  
Several shipments  
Pusher + barge combination



[See the video >](#)



2023  
DRUM PULPERS  
FINLAND TO GERMANY  
M/S Polyaland



2024  
TANKS  
BAY OF BOTHNIA  
M/S Reymar



2023 & 2024  
STEEL STRUCTURES  
INDIA TO SWEDEN  
M/S Electramar & M/S Aquamar

## ENGINES, TRANSFORMERS AND STATORS

Our coaster fleet is equipped with bulkheads, providing a cost-effective solution for shipping your goods as part cargo.

2024  
ENGINES  
FINLAND TO NETHERLANDS  
M/S Reiderdijk



2024  
STATOR  
POLAND TO FINLAND  
M/S Optimar





2022  
TRANSFORMER  
NETHERLANDS TO FINLAND  
M/S Baltic Merchant



## PROPULSION UNITS

Due to the height of these units, the best options from our coaster fleet are our 5,000-6,000 dwt vessels. These vessels are equipped with bulkheads, providing a cost-effective solution for shipping propulsion units as part cargo.

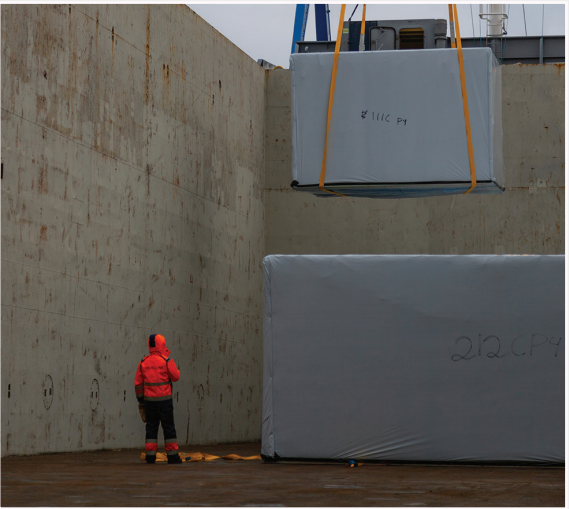
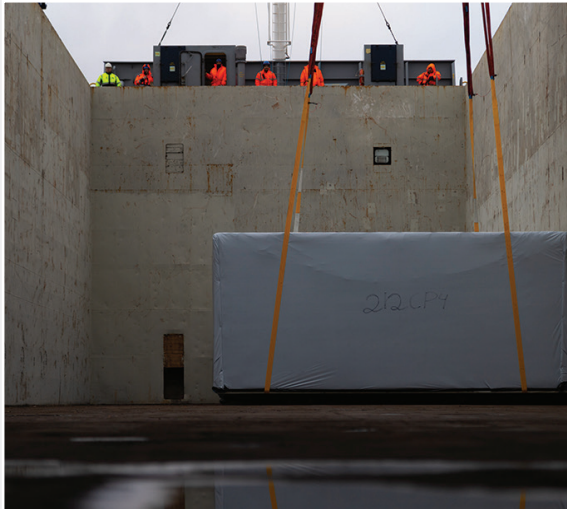
2018  
FINLAND TO FRANCE  
M/S Rocamar



# HOUSE MODULES

Transport by sea helps to decrease the traffic on the road network. Around 40 trucks were needed to transport the same amount modules than our 5,000 dwt vessel could transport in a single shipment.

2018 & 2019  
BALTIC SEA  
M/S Reymar & M/S Rocamar

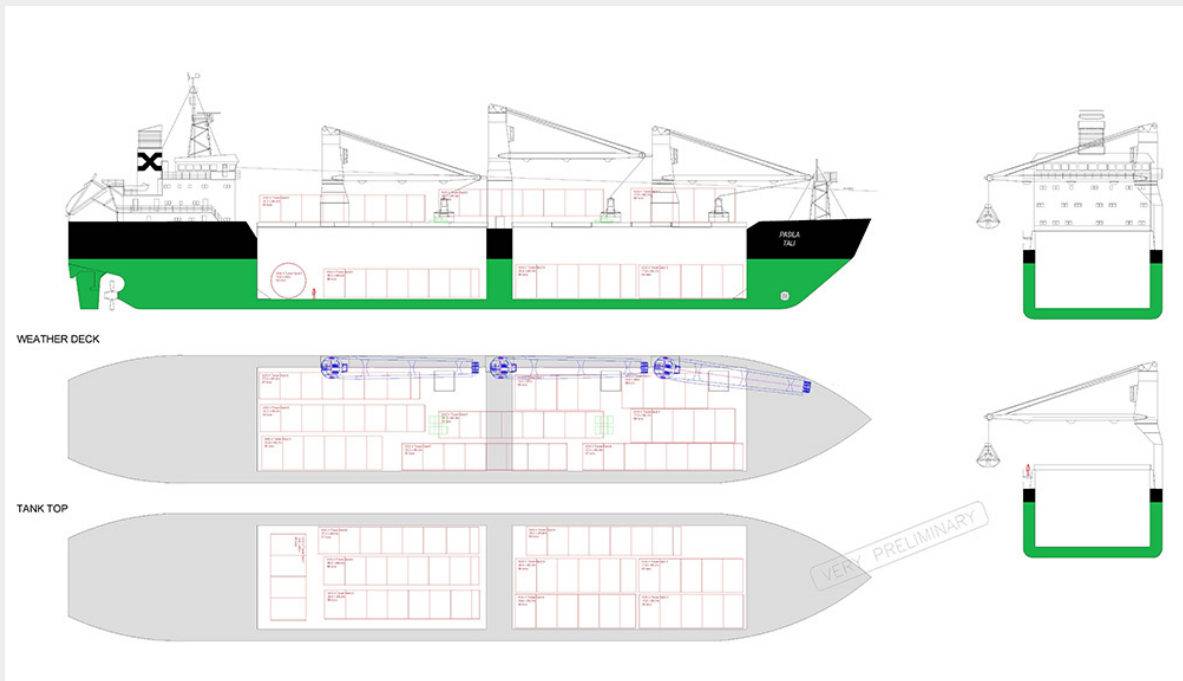


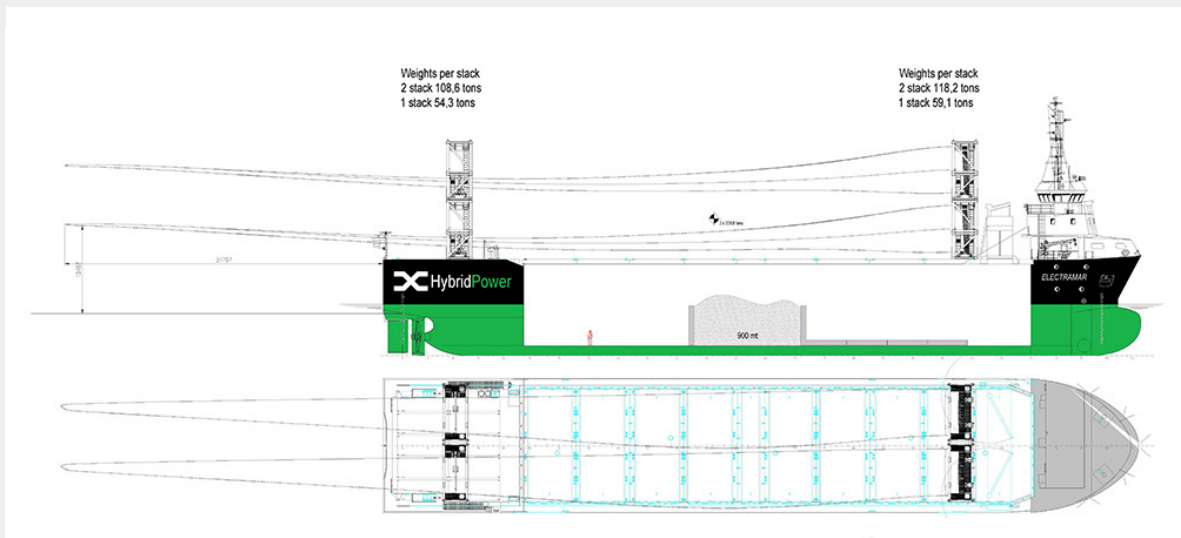
## ADDITIONAL SERVICES

### Inhouse engineering

All project cargoes require some level of engineering work as every shipment is unique. We can handle this engineering work in-house, using advanced software tools and the expertise of our skilled team.

This enables us to create detailed stowage and lashing plans specifically for your cargo, ensuring safe and secure transport. Our thorough approach optimizes space and stability while complying with all safety standards and regulations, giving you peace of mind during the shipping process.





### Comprehensive emission reporting

If you are looking for a way to monitor and reduce the environmental impact of your logistics operations, you might be interested in our Customer portal. The portal allows you to access and analyze the emissions from your shipments, as well as perform what-if calculations to explore different fuel combinations and their impact on the emissions of your shipments.

### Switch to renewable marine fuel - available across the fleet today

Did you know that our entire fleet of ships can run on Neste's co-processed marine fuel? This is a revolutionary product that can help us reduce our environmental impact and fight climate change. Unlike conventional fossil fuels, Neste's co-processed marine fuel is made from renewable and recycled materials, such as used cooking oil, animal fat or vegetable oils. Our LNG-powered vessels Viikki and Haaga are the most energy-efficient in our fleet and fully compatible to use 100% renewable liquefied biogas as a main fuel.

[Read more about our green solutions >](#)

If you have any questions, please contact:



### **Juha Ylitalo**

Head of Renewable Energy and Project  
Shipments  
Direct: +358 40 520 0928  
[projects@eslshipping.com](mailto:projects@eslshipping.com)  
[projects@atobatc.se](mailto:projects@atobatc.se)



**ESL Shipping**  
**AtoB@C Shipping**



### **ESL Shipping**

Lintulahdenkuja 10  
00500 Helsinki  
Finland  
[www.eslshipping.com](http://www.eslshipping.com)



### **AtoB@C Shipping**

Hamntorget 2A  
27139 Ystad  
Sweden  
[www.atobatc.com](http://www.atobatc.com)